



MATISSE COURT, LONDON, EC1Y 8SL

£519 Per Week

1 Bedrooms | 1 Bathrooms | To Let

Property Features

- One Bedroom Apartment
- Separate Fitted Kitchen
- Wooden Flooring
- Day Concierge
- Available End of June
- Fully Furnished
- Modern Tiled Bathroom
- North Facing Balcony
- Close To Old Street Tube

Ideally situated off Bunhill Row on a quiet road called Featherstone Street which is close to Old Street tube station is this fantastic ONE BEDROOM apartment in a modern development called Matisse Court. The property has been finished to a very high standard including a fully fitted kitchen with washer/dryer, dishwasher, oven & hobs and full sized fridge/freezer. There is also wooden flooring throughout the apartment with only two exceptions been the carpeted bedroom and white tiled modern bathroom. Other key features of this wonderful property include a private Balcony and a day concierge.

Matisse Court is located in a convenient location with the nearest transport links including Moorgate, Liverpool Street and Old Street Stations offering access to the Northern, Central, Elizabeth, Hammersmith and City, and Circle lines in addition to National Rail services.

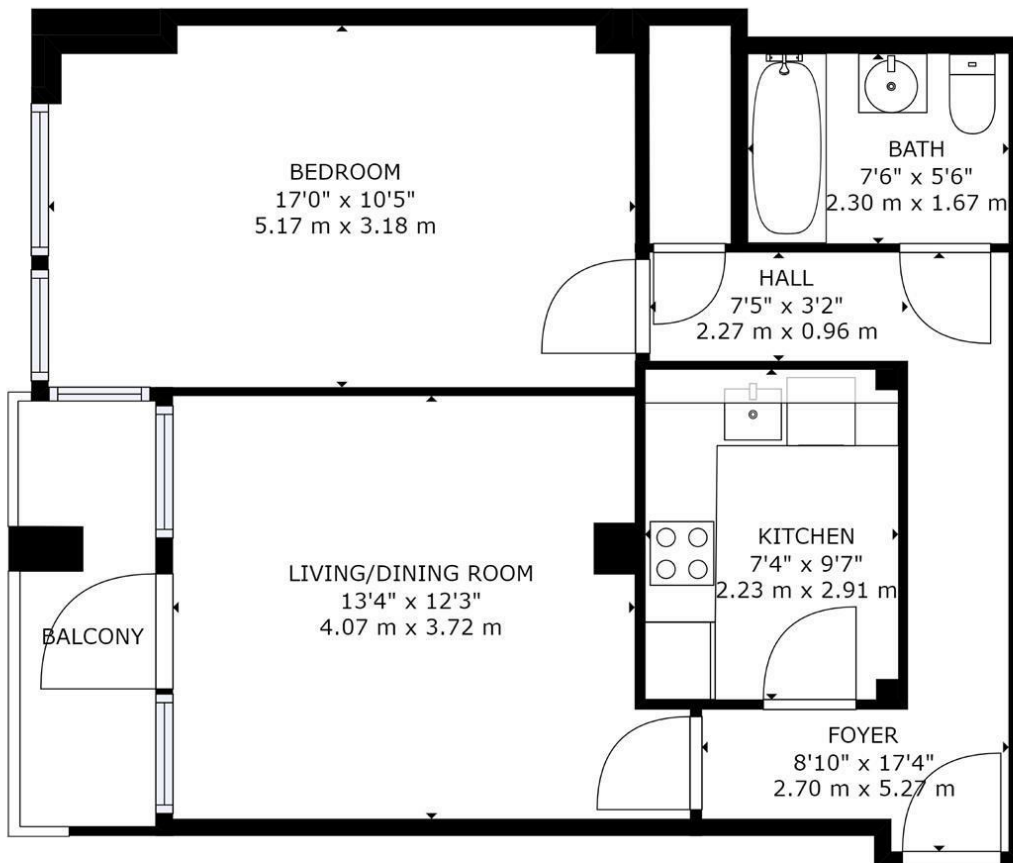
AVAILABLE END OF JUNE

Deposit: 5 Weeks Rent

No Agency Fee

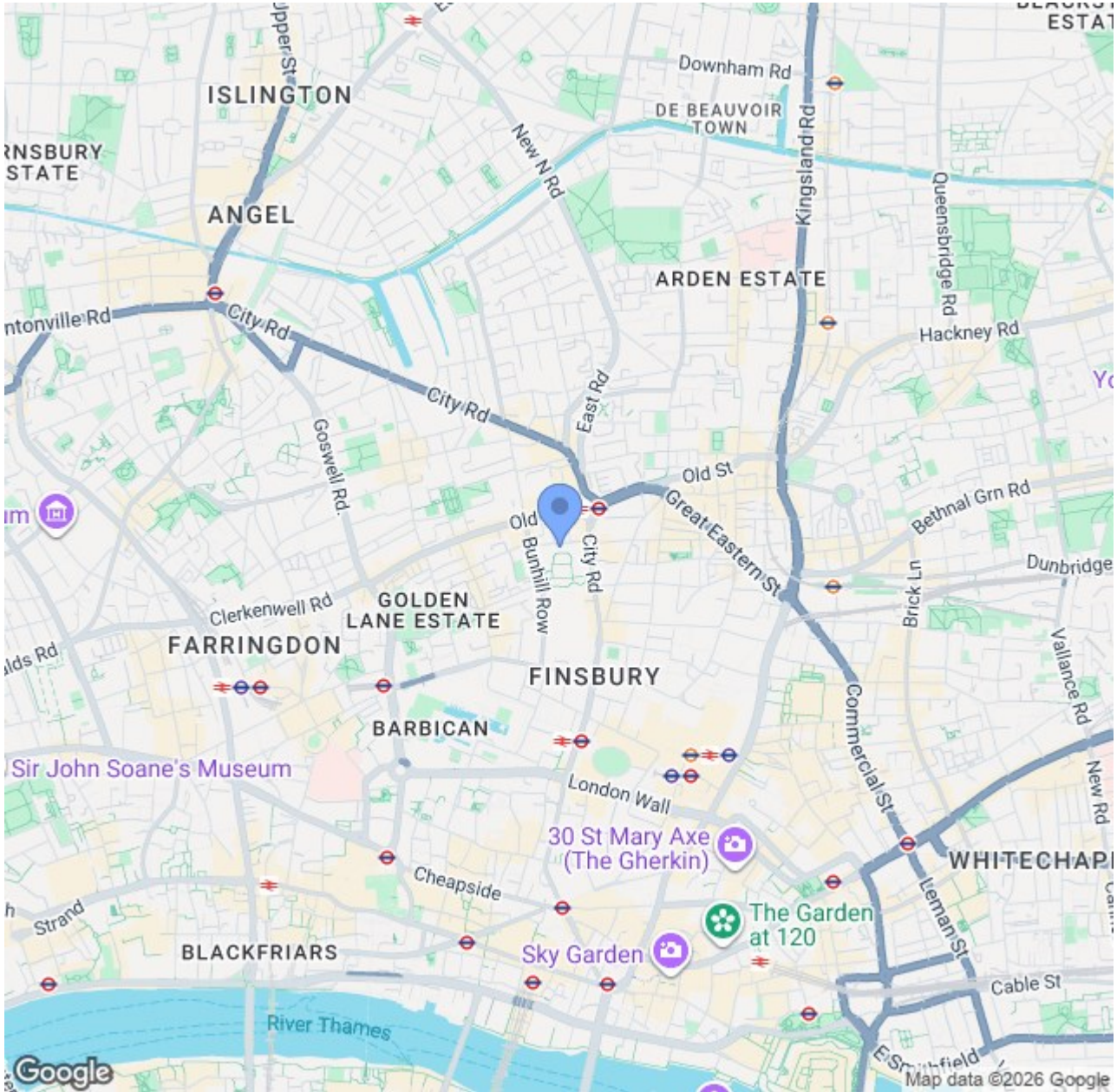
Council Tax Band E: £2,576.29 per annum (25% discount for single occupancy)





GROSS INTERNAL AREA
 : 583 sq ft, 54 m², EXCLUDED AREAS:
 BALCONY: 46 sq ft, 4 m²
 TOTAL: 583 sq ft, 54 m²
 SIZES AND DIMENSIONS ARE APPROXIMATE, ACTUAL MAY VARY.

POWERED BY
matterport



CONTACT US ABOUT THIS PROPERTY

122 Newgate Street, London, EC1A 7AA

T: 020 7600 0026

F: 020 7600 0025

E: property@scottcity.co.uk



Energy Efficiency Rating		Current	Potential
<i>Very energy efficient - lower running costs</i>			
(92 plus) A			
(81-91) B			
(69-80) C		78	86
(55-68) D			
(39-54) E			
(21-38) F			
(1-20) G			
<i>Not energy efficient - higher running costs</i>			
England & Wales		EU Directive 2002/91/EC	